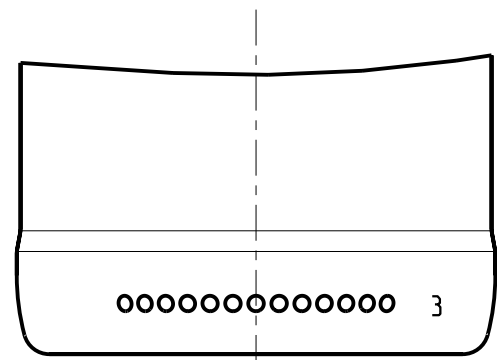
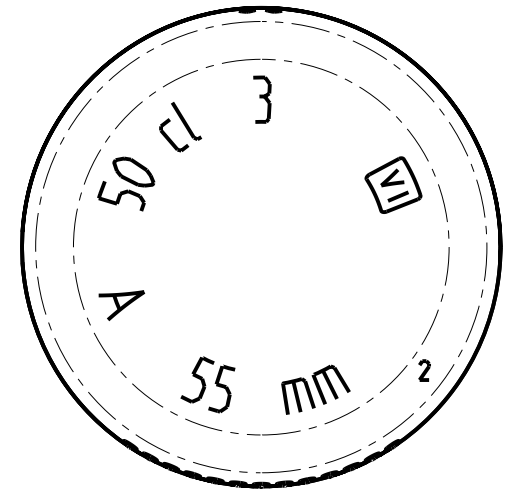
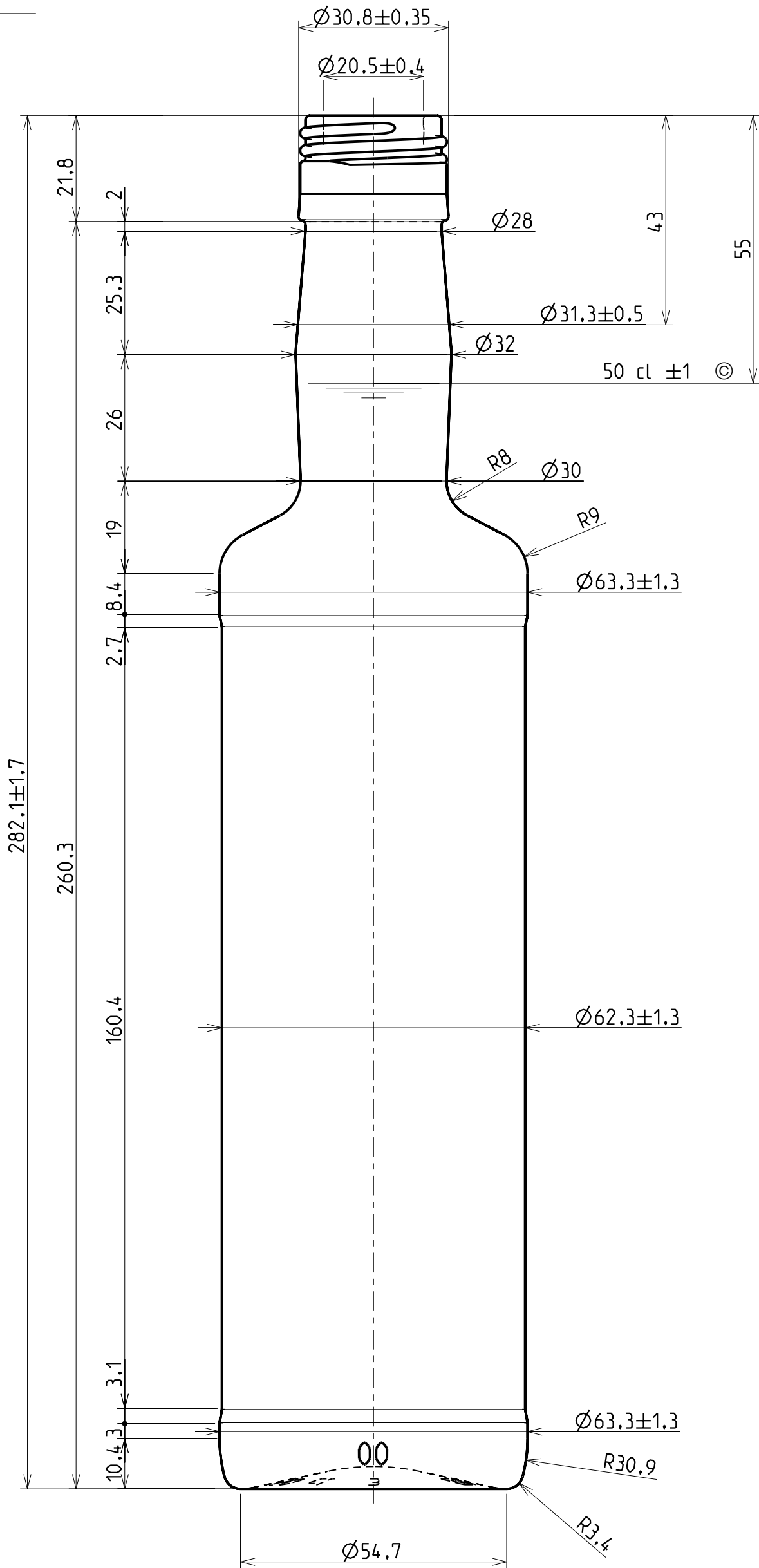


DATA \_\_\_\_\_

VI	MARCHIO DI FABBRICA TRADE MARK
A	CONTRASSEGNO TIPO VETRO GLASS TYPE
00	NUMERO STAMPO CAVITY NUMBER
2	ZIGRINATURA KNURLING
3	PUNTI LETTORE CAVITA' DOTE CODE
4	CODICE ALFANUMERICO NUMERIC CODE
5	GODRONATURA A DISCREZIONE DELLA VETRERIA STIPPLING AT THE DISCRETION OF THE GLASS MAKER
©	CONTROLLO STATISTICO STATISTICAL CONTROL



Questo disegno è di proprietà di VERALLIA ITALIA S.p.A. / This drawing is property of VERALLIA ITALIA S.p.A. - Documento Confidenziale / Confidential Document

QUOTE ESPRESSE IN mm / Dimension expressed in mm - SOLO LE QUOTE CON INDICAZIONE DI TOLLERANZA SONO IMPEGNATIVE / Dimensions are contractual only when tolerances are indicated.

R.V.	DATA	NC	DESCRIZIONE MODIFICA - MODIFICATION DESCRIPTION	FORMAT
				A3

	ARTICOLO ARTICLE	TONDA SE 17 52.2-PPAL	PROGETTISTA DRAWING BY	M. Mazza	CAPAC. RB (cl) BRIMFULL CAPACITY	52.2			
	BOCCA FINISH	UNI 6144 - 31,5 alta/44	DATA DATE	24/02/06	PESO (gr) GLASS WEIGHT	330			
	CLIENTE CUSTOMER	VARI	ANGOLO DI CADUTA STABILITY	14.1°	APPROVATO DA APPROVED BY	R. Pedrazzi			
	DIAMETRO MIN. FORO PASSANTE MINIMUM INTERNAL DIAMETER	16	TOLLERANZA VERTICALITA' VERTICALITY TOLERANCE	± 3.1	SCALA SCALE	1:1	STUDIO CODE STUDY	ST19252	R.V.